



## **CRITERIA – I**

### **CURRICULAR ASPECTS**

<b>Key Indicator - 1.4</b>	<b>Feedback System</b>
<b>Metric - 1.4.1 (Q<sub>n</sub>M)</b>	<b>Institution obtains feedback on the academic performance and ambience of the institution from various stakeholders, such as Students, Teachers, Employers, Alumni etc. and action taken report on the feedback is made available on institutional website</b>



*Principal*

Vaagdevi Institute of Pharmaceutical Sciences  
Bollikunta, Warangal, Telangana 506 005.

*Viswambhara Educational Society*

**VAAGDEVI INSTITUTE OF PHARMACEUTICAL SCIENCES**

*Affiliated to Kakatiya University, Approved by PCI-New Delhi, AICTE, New Delhi*  
**P.O. BOLLIKUNTA, WARANGAL- 506 005 (Telangana State)**



Viswambhara Educational Society

## VAAGDEVI INSTITUTE OF PHARMACEUTICAL SCIENCES


Affiliated to Kakatiya University, Approved by PCI-New Delhi, AICTE, New Delhi  
P.O. BOLLIKUNTA, WARANGAL- 506 005 (Telangana State)

### FEEDBACK ANALYSIS FOR THE ACADEMIC YEAR 2022-23

S.No.	COURSES OFFERED	NUMBER OF FEEDBACK COLLECTED
1	B.PHARMACY	363
2	PHARM D	134
3	M.PHARMACY (PHARMACEUTICS)	12
4	M.PHARMACY (INDUSTRIAL PHARMACY)	11
5	M.PHARMACY (PHARMACOLOGY)	13
6	M.PHARMACY (PHARMACEUTICAL ANALYSIS)	10

### STUDENTS FEEDBACK ON CURRICULUM

S.No	Parameters	Evaluation Scale				
		Excellent	Very good	Good	Average	Poor
1	The relevance of curriculum in carrier orientation	529	12	2	0	0
2	Prescribed books and online educational resources availability in the library	526	15	2	0	0
3	Value added courses offered in the curriculum	519	16	8	0	0
4	Teaching and mentoring process of the college	520	19	4	0	0
5	Modern teaching aids, power point presentations, e-content etc. usage by the teachers	517	19	7	0	0
6	Assessment and evaluation process	515	18	10	0	0
7	Efforts taken by the college to improve the quality of teaching and learning process	529	12	2	0	0
8	Design of curriculum to enhance student's employability	523	17	3	0	0

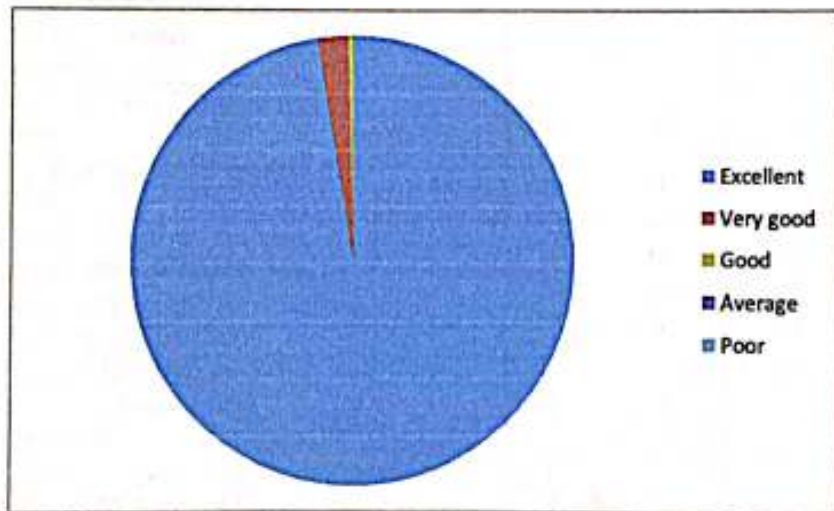
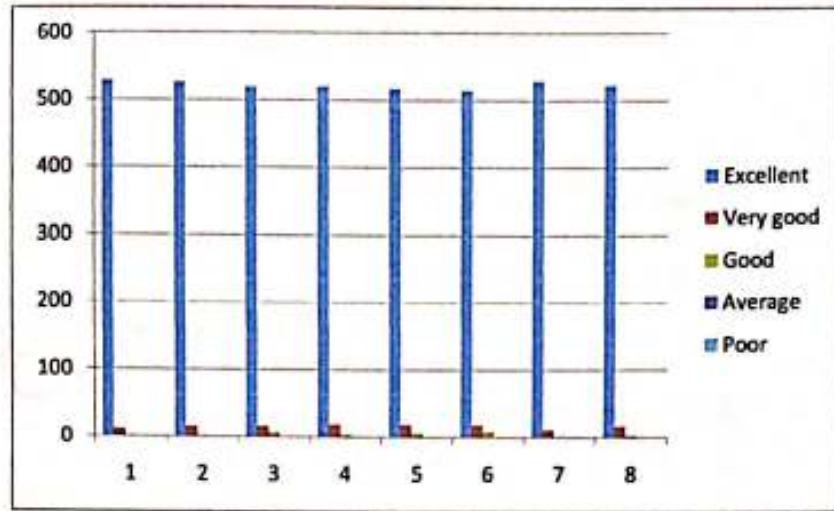
  
**Principal**  
Vaagdevi Institute of Pharmaceutical Sciences  
Bollikunta, Warangal, Telangana - 506 005





Viswambhara Educational Society  
**VAAGDEVI INSTITUTE OF PHARMACEUTICAL SCIENCES**

Affiliated to Kakatiya University, Approved by PCI-New Delhi, ARTE, New Delhi  
P.O. BOLLIKUNTA, WARANGAL- 506 005 (Telangana State)



**STUDENT FEEDBACK 2022-23**



**Principal**  
Vaagdevi Institute of Pharmaceutical Sciences  
Bollikunta, Warangal, Telangana 506 005



Viswambhara Educational Society

## VAAGDEVI INSTITUTE OF PHARMACEUTICAL SCIENCES

Affiliated to Kakatiya University, Approved by PCI-New Delhi, AICTE, New Delhi  
P.O. BOLLIKUNTA, WARANGAL- 506 005 (Telangana State)

### TEACHERS FEEDBACK

S.No	Parameters	Evaluation Scale				
		Excellent	Very good	Good	Average	Poor
1	The contents of curriculum are as per the need of students and industry requirements.	41	2	1	0	0
2	The timely coverage of syllabus is possible in the mentioned number of hours	40	2	2	1	0
3	The units/Sections in the syllabus are properly sequenced	39	2	2	1	0
4	The curriculum provides opportunity for conduct research and project related activities	40	2	1	1	0
5	The subject/syllabus is interesting for the students	41	1	1	1	0
6	Does the syllabus cover modern and advanced topics	41	1	1	1	0
7	The learning objectives are clear and appropriate to the curriculum	40	2	1	1	0
8	The course /syllabus has good balance between theory and practical	40	1	1	2	0
9	The syllabus designed in a way to improve employment / entrepreneurship	40	2	1	1	0
10	The books prescribed/reference materials are relevant, updated and appropriate	42	1	1	0	0



Principal  
Vaagdevi Institute of Pharmaceutical Sciences  
Bollikunta, Warangal, Telangana - 506 005

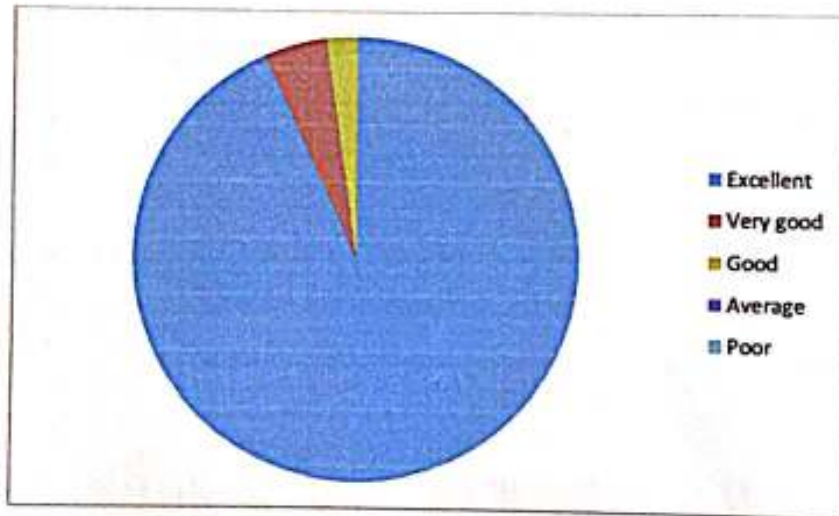
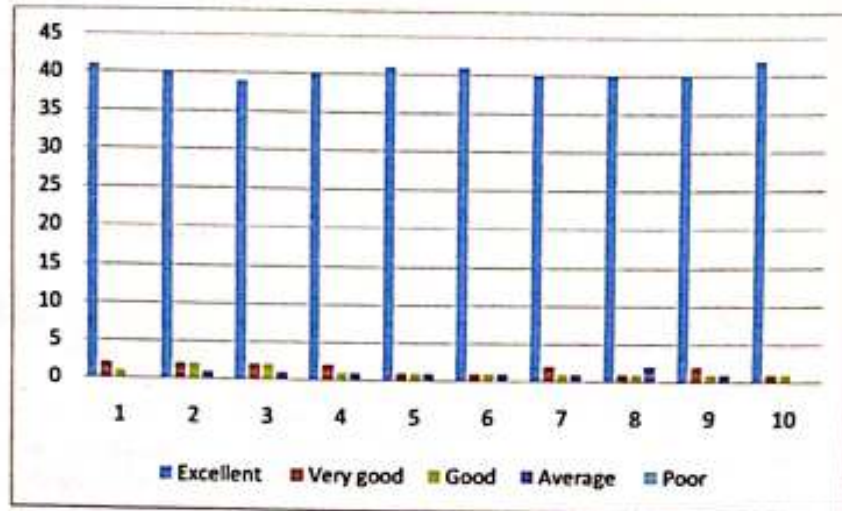


Viswambhara Educational Society

# VAAGDEVI INSTITUTE OF PHARMACEUTICAL SCIENCES

Affiliated to Kakatiya University, Approved by PCI-New Delhi, AICTE, New Delhi

P.O. BOLLIKUNTA, WARANGAL- 506 005 (Telangana State)



## TEACHER FEEDBACK 2022-23



**Principal**

Vaagdevi Institute of Pharmaceutical Sciences  
Bollikunta, Warangal, Telangana 506 005



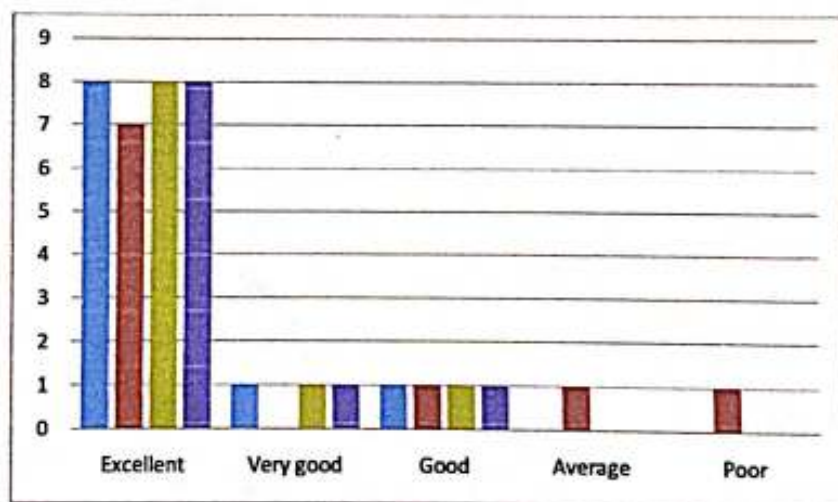
Viswambhara Educational Society  
**VAAGDEVI INSTITUTE OF PHARMACEUTICAL SCIENCES**

Affiliated to Kakatiya University, Approved by PCI-New Delhi, AICTE, New Delhi  
 P.O. BOLLIKUNTA, WARANGAL- 506 005 (Telangana State)

**EMPLOYER FEEDBACK**

A four point scale feedback from employer on the curriculum is collected. We have received total ten employer's feedback

S.No	Parameters	Evaluation Scale				
		Excellent	Very good	Good	Average	Poor
1	curriculum relevance in developing the expecting outcomes from the candidate	8	1	1	0	0
2	curriculum relevance in developing a protective attitude in the candidate	7	0	1	1	1
3	curriculum relevance in addressing the needs/problems of the client groups	8	1	1	0	0
4	Skill sets	8	1	1	0	0



*(Handwritten Signature)*

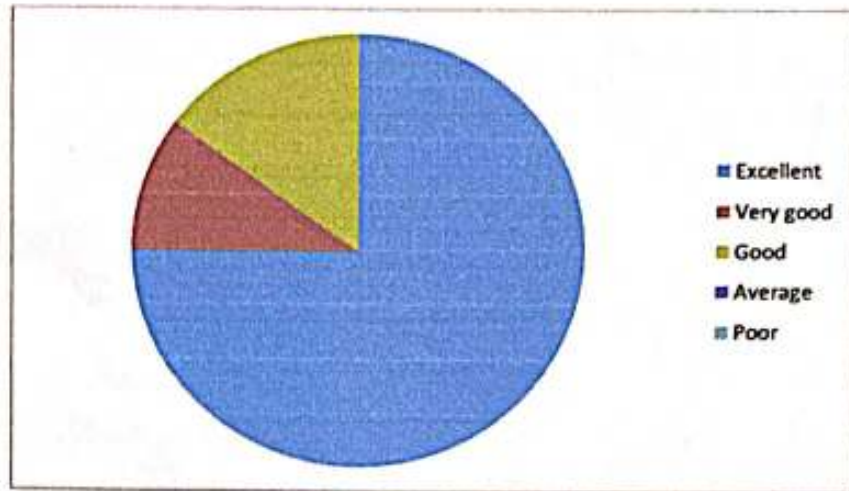
Principal  
 Vaagdevi Institute of Pharmaceutical Science,  
 Bollikunta Warangal, Telangana - 506 005



Viswambhara Educational Society

# VAAGDEVI INSTITUTE OF PHARMACEUTICAL SCIENCES

Affiliated to Kakatiya University, Approved by PCI-New Delhi, AICTE, New Delhi  
P.O. BOLLIKUNTA, WARANGAL- 506 005 (Telangana State)



**EMPLOYER FEEDBACK 2022-23**



P. Kiranpal  
Vaagdevi Institute of Pharmaceutical Sciences  
Bollikunta Warangal Telangana 506 005



# VAAGDEVI INSTITUTE OF PHARMACEUTICAL SCIENCES

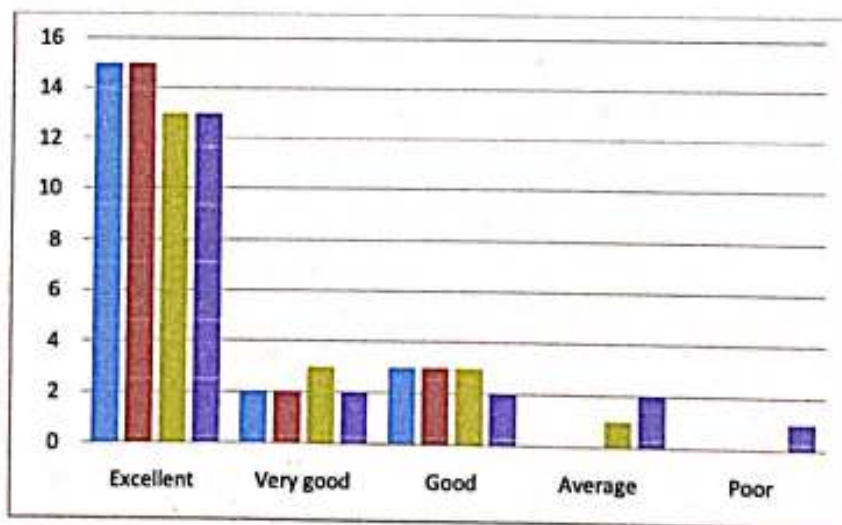
Affiliated to Kakatiya University, Approved by PCI-New Delhi, AICTE, New Delhi  
P.O. BOLLIKUNTA, WARANGAL- 506 005 (Telangana State)

## ALUMNI FEEDBACK

A four point scale feedback from alumni on the curriculum is collected. We have received total 20

S.No	Parameters	Evaluation Scale				
		Excellent	Very good	Good	Average	Poor
1	Institute organizes various kinds of activities for overall development of students	15	2	3	0	0
2	Institute handles student's grievances properly	15	2	3	0	0
3	The course /syllabus has good balance between theory and practical	13	3	3	1	0
4	The coverage of curriculum is catering the professional needs.	13	2	2	2	1

alumni's feedback



*M. A. ...*

**Principal**  
Vaagdevi Institute of Pharmaceutical Sciences  
Bollikunta, Warangal, Telangana 506 005

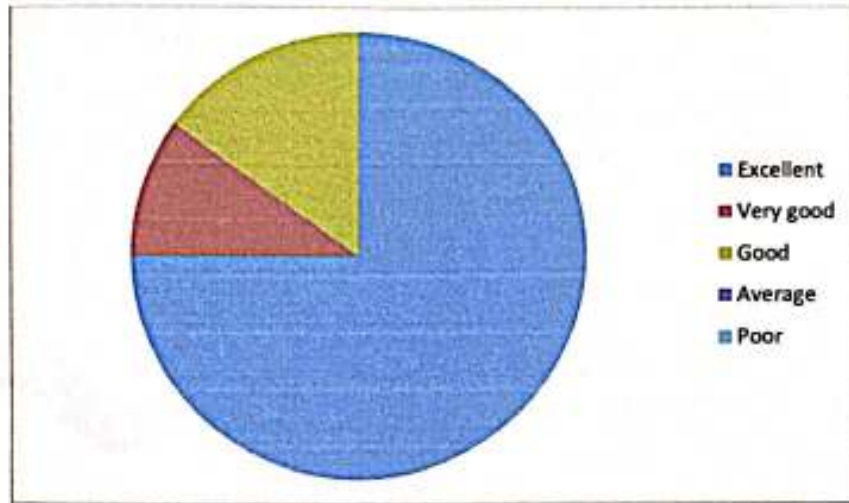




Viswambhara Educational Society

# VAAGDEVI INSTITUTE OF PHARMACEUTICAL SCIENCES

Affiliated to Kakatiya University, Approved by PCI-New Delhi, AICTE, New Delhi  
P.O. BOLLIKUNTA, WARANGAL- 506 005 (Telangana State)



ALUMNI FEEDBACK 2022-23



**Principal**  
Vaagdevi Institute of Pharmaceutical Sciences  
Bollikunta, Warangal, Telangana 506 006



Viswambhara Educational Society

## VAAGDEVI INSTITUTE OF PHARMACEUTICAL SCIENCES

Affiliated to Kakatiya University, Approved by PCI-New Delhi, AICTE, New Delhi  
P.O. BOLLIKUNTA, WARANGAL - 506 005 (Telangana State)

### FEEDBACK ANALYSIS FOR THE ACADEMIC YEAR 2021-22

S.No.	COURSES OFFERED	NUMBER OF FEEDBACK COLLECTED
1	B.PHARMACY	306
2	PHARM D	117
3	M.PHARMACY (PHARMACEUTICS)	13
4	M.PHARMACY (INDUSTRIALPHARMACY)	10
5	M.PHARMACY (PHARMACOLOGY)	14
6	M.PHARMACY (PHARMACEUTICAL ANALYSIS)	13

### STUDENTS FEEDBACK ON CURRICULUM

S.No	Parameters	Evaluation Scale				
		Excellent	Very good	Good	Average	Poor
1	The relevance of curriculum in carrier orientation	455	8	1	9	0
2	Prescribed books and online educational resources availability in the library	459	9	0	5	0
3	Value added courses offered in the curriculum	460	6	7	0	0
4	Teaching and mentoring process of the college	457	10	3	2	1
5	Modern teaching aids, power point presentations, e-content etc. usage by the teachers	459	9	4	1	0
6	Assessment and evaluation process	454	12	6	1	0
7	Efforts taken by the college to improve the quality of teaching and learning process	440	19	8	6	0
8	Design of curriculum to enhance student's employability	451	13	9	0	0

**Principal**

**Vaagdevi Institute of Pharmaceutical Sciences  
Bollikunta, Warangal, Telangana 506 005**

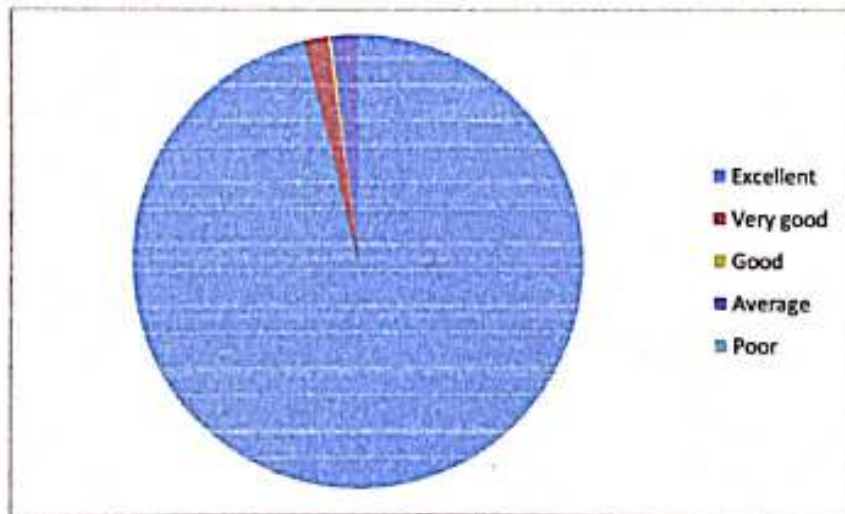
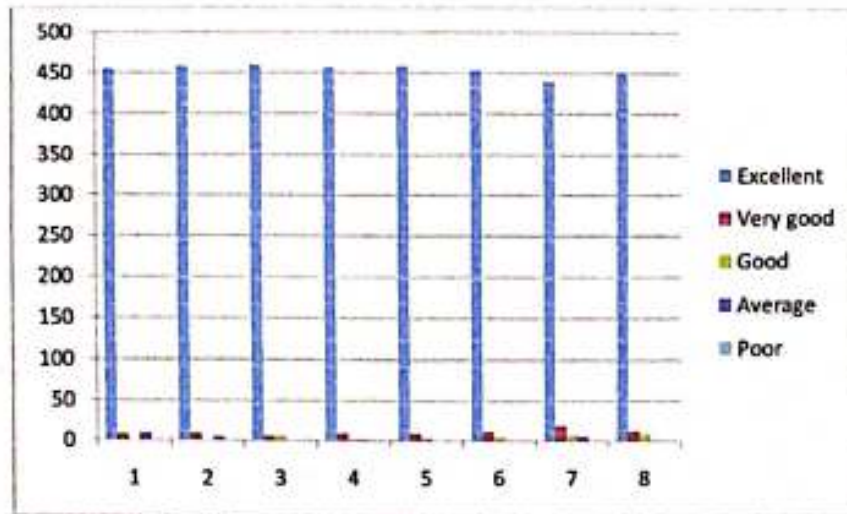




Viswambharya Educational Society

# VAAGDEVI INSTITUTE OF PHARMACEUTICAL SCIENCES

Affiliated to Kakatiya University, Approved by PCI-New Delhi, AICTE, New Delhi  
P.O. BOLLIKUNTA, WARANGAL- 506 005 (Telangana State)



## STUDENT FEEDBACK 2021-22

**Principal**

Vaagdevi Institute of Pharmaceutical Science  
Bollikunta, Warangal, Telangana 506 005





**TEACHERS FEEDBACK**

A ten point feedback from 46 faculty members were collected

S.No	Parameters	Evaluation Scale				
		Excellent	Very good	Good	Average	Poor
1	The contents of curriculum are as per the need of students and industry requirements.	35	7	2	1	0
2	The timely coverage of syllabus is possible in the mentioned number of hours	37	7	1	0	0
3	The units/Sections in the syllabus are properly sequenced	40	3	1	1	0
4	The curriculum provides opportunity for conduct research and project related activities	42	2	0	1	0
5	The subject/syllabus is interesting for the students	41	3	0	1	0
6	Does the syllabus cover modern and advanced topics	41	3	0	1	0
7	The learning objectives are clear and appropriate to the curriculum	40	4	1	0	0
8	The course /syllabus has good balance between theory and practical	38	5	1	1	0
9	The syllabus designed in a way to improve employment / entrepreneurship	39	4	1	1	0
10	The books prescribed/reference materials are relevant, updated and appropriate	36	7	1	1	0



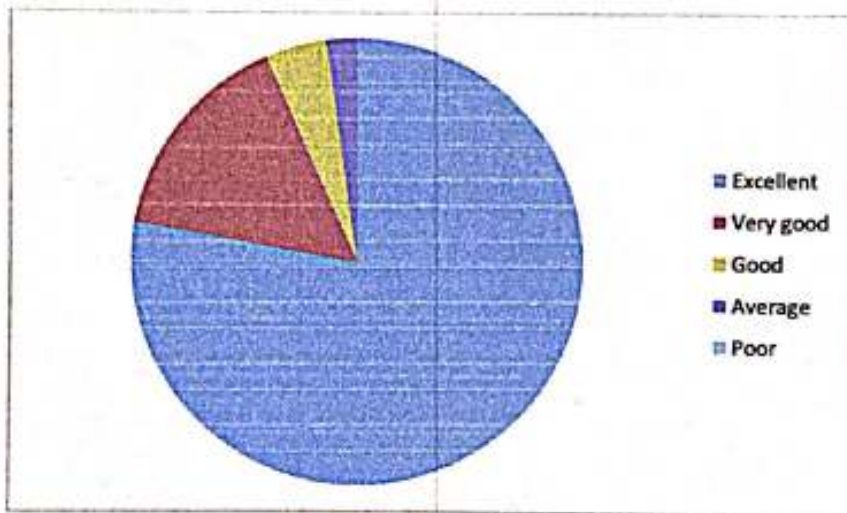
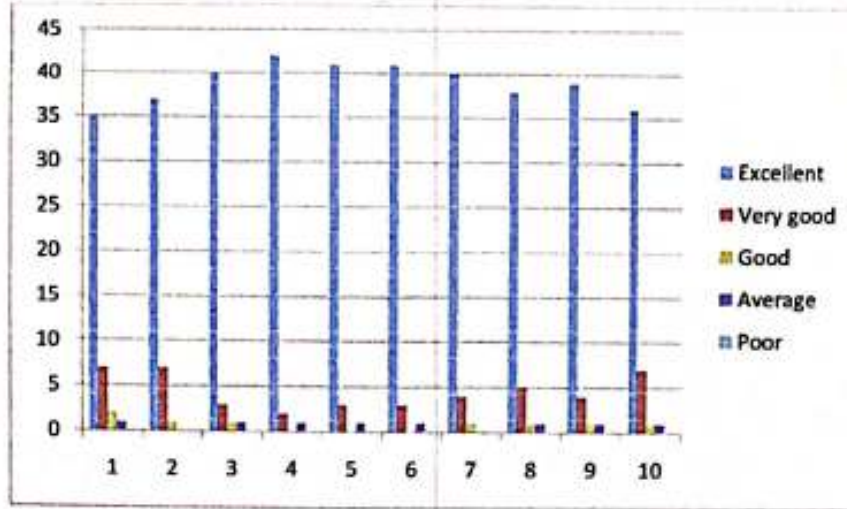
  
**Principal**  
Vaagdevi Institute of Pharmaceutical Sciences  
Bollikunta, Warangal, Telangana. 506 005



Vaswambhara Educational Society

# VAAGDEVI INSTITUTE OF PHARMACEUTICAL SCIENCES

Affiliated to Kakatiya University, Approved by PCI-New Delhi, AICTE, New Delhi  
P.O. BOLLIKUNTA, WARANGAL- 506 005 (Telangana State)



TEACHER FEEDBACK 2021-22



**Principal**

**Vaagdevi Institute of Pharmaceutical Science,  
Bollikunta, Warangal, Telangana 506 005**



# VAAGDEVI INSTITUTE OF PHARMACEUTICAL SCIENCES

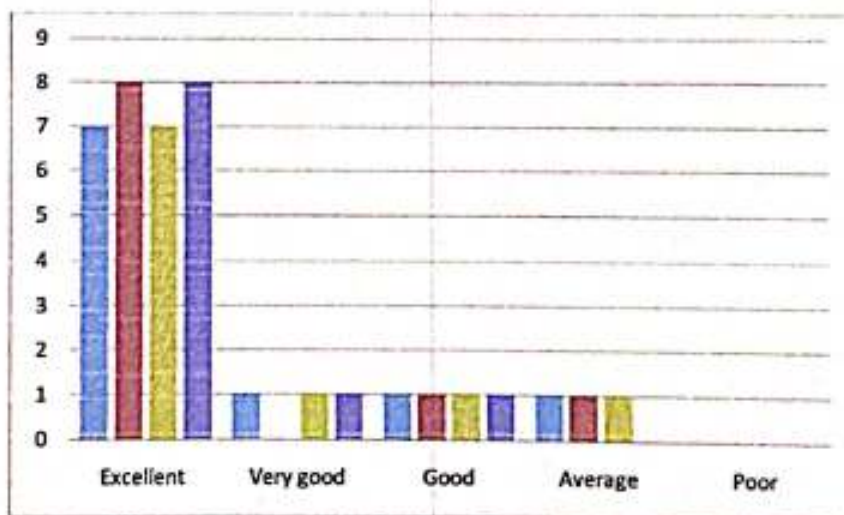
Affiliated to Kakathiya University, Approved by PCI-New Delhi, All. H., New Delhi

P.O. BOLLIKUNTA, WARANGAL - 506 005 (Telangana State)

## EMPLOYER FEEDBACK

A four point scale feedback from employer on the curriculum is collected. We have received total ten employer's feedback

S.No	Parameters	Evaluation Scale				
		Excellent	Very good	Good	Average	Poor
1	curriculum relevance in developing the expecting outcomes from the candidate	7	1	1	1	0
2	curriculum relevance in developing a protective attitude in the candidate	8	0	1	1	0
3	curriculum relevance in addressing the needs/problems of the client groups	7	1	1	1	0
4	Skill sets	8	1	1	0	0



**Principal**

Vaagdevi Institute of Pharmaceutical Sciences  
Bollikunta, Warangal, Telangana 506 005

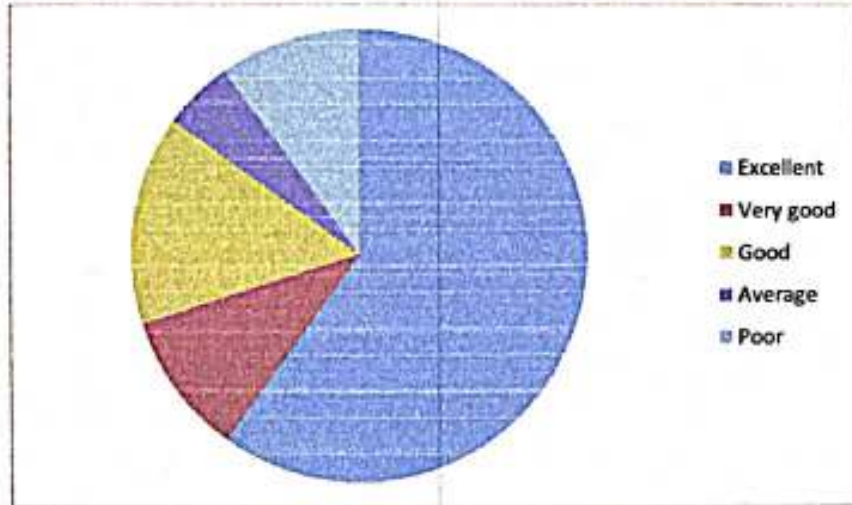


Viswambhara Educational Society

# VAAGDEVI INSTITUTE OF PHARMACEUTICAL SCIENCES

Affiliated to Kakatiya University, Approved by PCI-New Delhi, AICTE, New Delhi

P.O. BOLLIKUNTA, WARANGAL- 506 005 (Telangana State)



**EMPLOYER FEEDBACK 2021-22**



**Principal**  
Vaagdevi Institute of Pharmaceutical Sciences  
Bollikunta, Warangal, Telangana 506 005



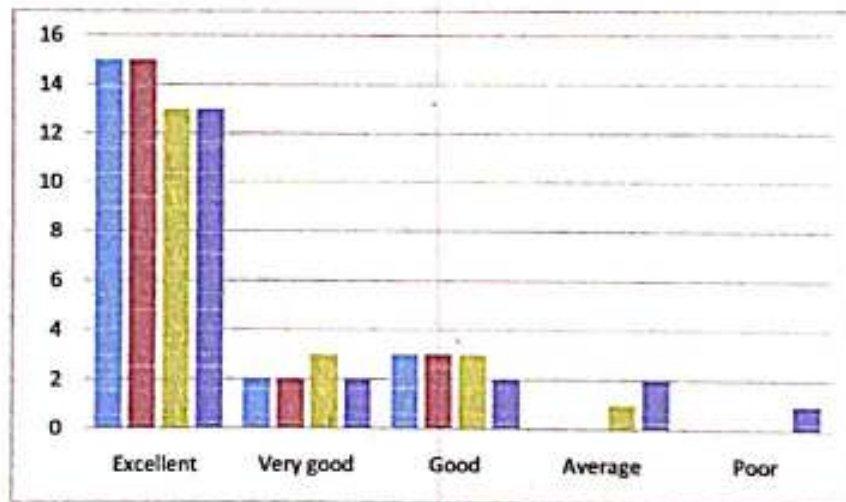
## VAAGDEVI INSTITUTE OF PHARMACEUTICAL SCIENCES

Affiliated to Kakatiya University, Approved by PCI, New Delhi, AICTE, New Delhi  
P.O. BOLLIKUNTA, WARANGAL- 506 005 (Telangana State)

### ALUMNI FEEDBACK

A four point scale feedback from alumni on the curriculum is collected. We have received total 20 alumni's feedback

S.No	Parameters	Evaluation Scale				
		Excellent	Very good	Good	Average	Poor
1	Institute organizes various kinds of activities for overall development of students	12	2	3	1	2
2	Institute handles student's grievances properly	12	2	3	3	0
3	The course /syllabus has good balance between theory and practical	13	3	3	1	0
4	The coverage of curriculum is catering the professional needs.	12	2	2	2	1



**Principal**

Vaagdevi Institute of Pharmaceutical Science:  
Bollikunta, Warangal, Telangana 506 005



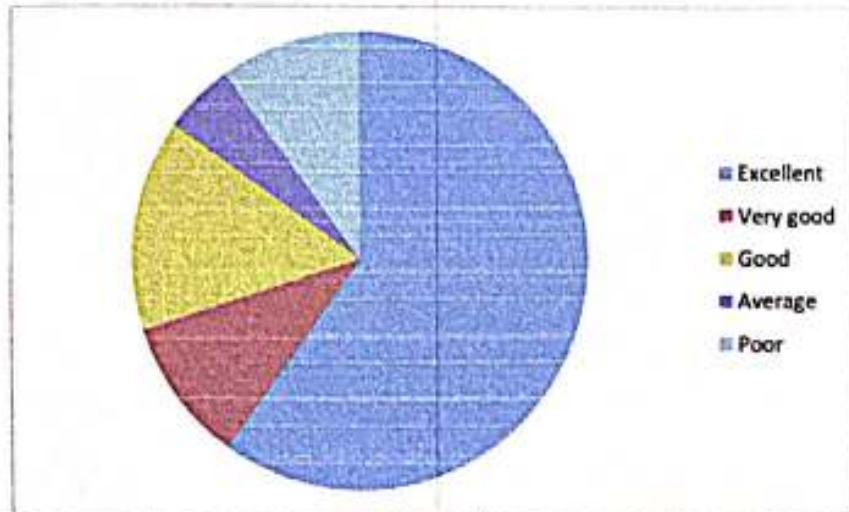


Viswambhara Educational Society

# VAAGDEVI INSTITUTE OF PHARMACEUTICAL SCIENCES

Affiliated to Kakatiya University, Approved by PCI-New Delhi, AICTE, New Delhi

P.O. BOLLIKUNTA, WARANGAL - 506 005 (Telangana State)



ALUMNI FEEDBACK 2021-22



**Principal**  
Vaagdevi Institute of Pharmaceutical Sciences  
Bollikunta, Warangal, Telangana 506 005

**VAAGDEVI INSTITUTE OF PHARMACEUTICAL SCIENCES**

Affiliated to Kakatiya University, Approved by PCI-New Delhi, ABTE, New Delhi

P.O. BOLLIKUNTA, WARANGAL- 506 005 (Telangana State)

**FEEDBACK ANALYSIS FOR THE ACADEMIC YEAR 2020-21**

S.No.	COURSES OFFERED	NUMBER OF FEEDBACK COLLECTED
1	B.PHARMACY	263
2	PHARM D	111
3	M.PHARMACY (PHARMACEUTICS)	11
4	M.PHARMACY (PHARMACOLOGY)	9
5	M.PHARMACY (PHARMACEUTICAL ANALYSIS)	10

**STUDENTS FEEDBACK ON CURRICULUM**

S.No	Parameters	Evaluation Scale				
		Excellent	Very good	Good	Average	Poor
1	The contents of curriculum are as per the need of students and industry requirements.	358	12	9	13	12
2	The timely coverage of syllabus is possible in the mentioned number of hours	353	19	11	11	10
3	The units/Sections in the syllabus are properly sequenced	355	16	12	11	10
4	The curriculum provides opportunity for conduct research and project related activities	354	18	10	15	7
5	The subject/syllabus is interesting for the students	361	15	8	15	5
6	Does the syllabus cover modern and advanced topics	358	18	9	13	6
7	The learning objectives are clear and appropriate to the curriculum	367	13	5	12	7
8	The course /syllabus has good balance between theory and practical	355	19	12	10	8
9	The syllabus designed in a way to improve employment / entrepreneurship	363	16	10	11	4
10	The books prescribed/reference materials are relevant, updated and appropriate	382	4	12	4	2

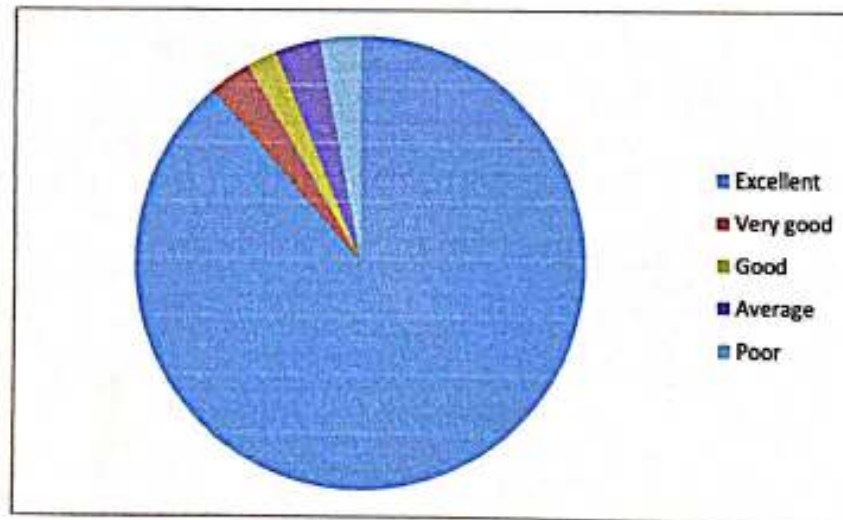
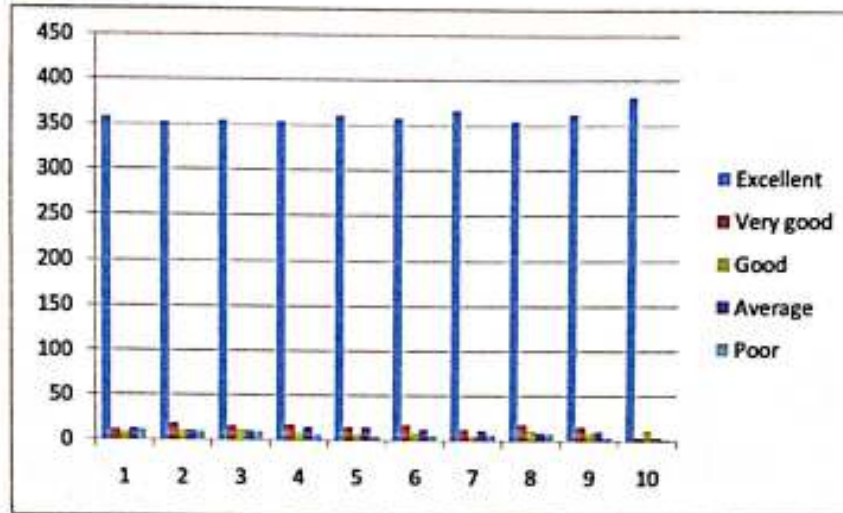
**Principal**Vaagdevi Institute of Pharmaceutical Sciences  
Bollikunta, Warangal, Telangana 506005



# VAAGDEVI INSTITUTE OF PHARMACEUTICAL SCIENCES

Affiliated to Kakatiya University, Approved by PCI-New Delhi, AICTE, New Delhi

P.O. BOLLIKUNTA, WARANGAL- 506 005 (Telangana State)



STUDENT FEEDBACK 2020-21

Principal

Vaagdevi Institute of Pharmaceutical Sciences  
Bollikunta, Warangal, Telangana 506 005





Viswambhara Educational Society

## VAAGDEVI INSTITUTE OF PHARMACEUTICAL SCIENCES

Affiliated to Kakatiya University, Approved by PCI-New Delhi, AICTE, New Delhi  
P.O. BOLLIKUNTA, WARANGAL- 506 005 (Telangana State)

### TEACHER'S FEEDBACK

A ten point feedback from 45 faculty members was collected and analysed

S.No	Parameters	Evaluation Scale				
		Excellent	Very good	Good	Average	Poor
1	The relevance of curriculum in carrier orientation	41	1	1	1	1
2	Prescribed books and online educational resources availability in the library	41	1	1	2	0
3	Value added courses offered in the curriculum	42	1	1	1	0
4	Teaching and mentoring process of the college	41	1	1	2	1
5	Modern teaching aids, power point presentations, e-content etc. usage by the teachers	42	1	1	1	0
6	Assessment and evaluation process	44	1	0	0	0
7	Efforts taken by the college to improve the quality teaching and learning process	43	0	1	0	1
8	Design of curriculum to enhance student's employability	42	1	1	0	1

*Principal*

Vaagdevi Institute of Pharmaceutical Sciences  
Bollikunta, Warangal, Telangana 506 005

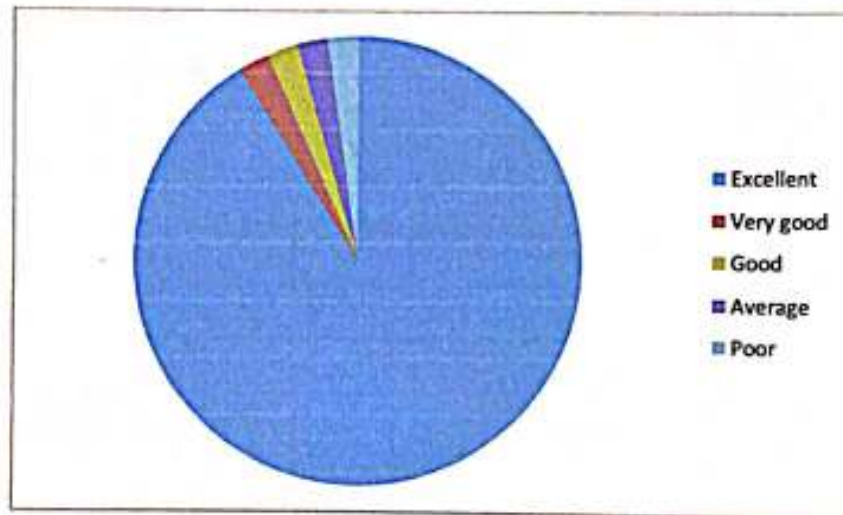
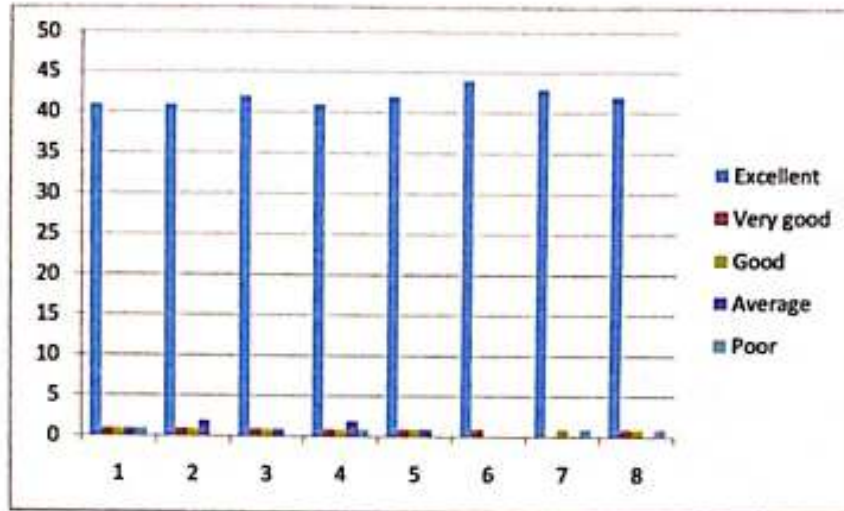




Viswambhara Educational Society

# VAAGDEVI INSTITUTE OF PHARMACEUTICAL SCIENCES

Affiliated to Kakatiya University, Approved by PCI-New Delhi, AICTE, New Delhi  
P.O. BOLLIKUNTA, WARANGAL- 506 005 (Telangana State)



## TEACHER FEEDBACK 2020-21



*H. A.*  
Principal  
Vaagdevi Institute of Pharmaceutical Sciences  
Bollikunta, Warangal, Telangana 506 005



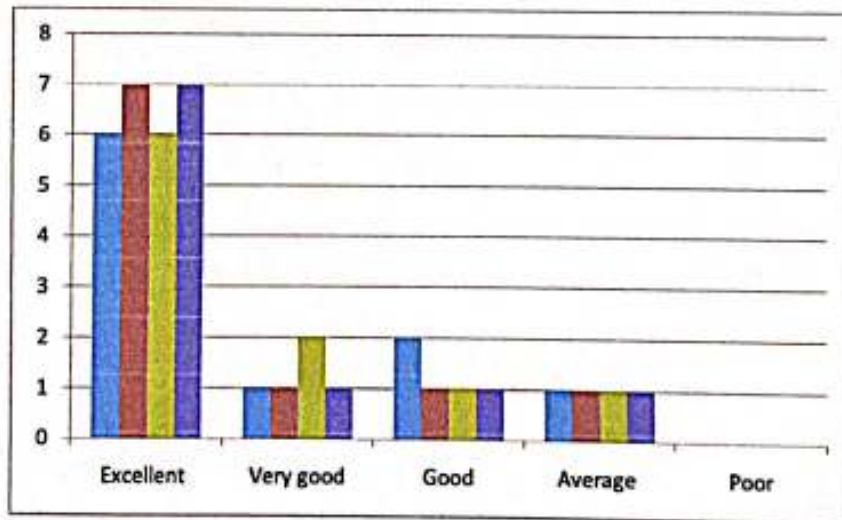
Viswambhara Educational Society  
**VAAGDEVI INSTITUTE OF PHARMACEUTICAL SCIENCES**

Affiliated to Kakatiya University; Approved by PCI-New Delhi, AICTE, New Delhi  
 P.O. BOLLIKUNTA, WARANGAL- 506 005 (Telangana State)

**EMPLOYER FEEDBACK**

A four point scale feedback from employer on the curriculum is collected. We have received total ten employer's feedback

S. No	Parameters	Evaluation Scale				
		Excellent	Very good	Good	Average	Poor
1	curriculum relevance in developing the expecting outcomes from the candidate	6	1	2	1	0
2	curriculum relevance in developing a protective attitude in the candidate	7	1	1	1	0
3	curriculum relevance in addressing the needs/problems of the client groups	6	2	1	1	0
4	Skill sets	7	1	1	1	0



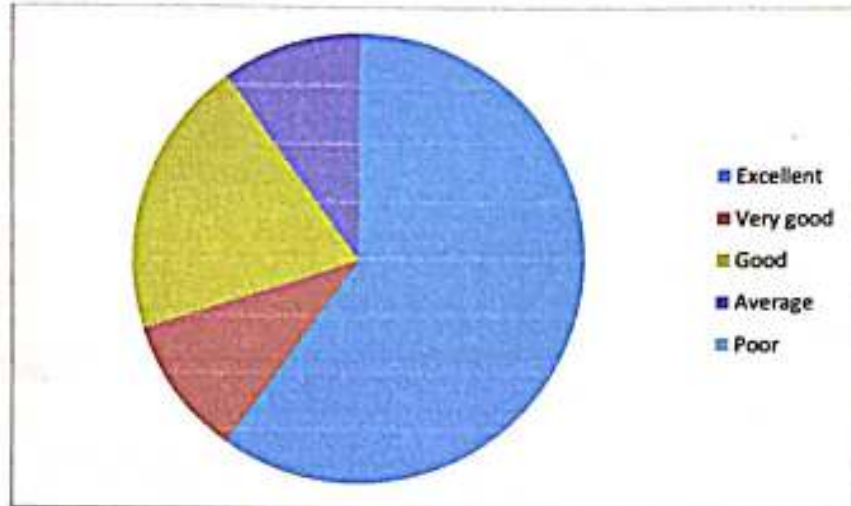
*M. N.*  
 Principal  
 Vaagdevi Institute of Pharmaceutical Sciences  
 Bollikunta, Warangal, Telangana 506 005



Viswambhara Educational Society

# VAAGDEVI INSTITUTE OF PHARMACEUTICAL SCIENCES

Affiliated to Kakatiya University, Approved by PCI-New Delhi, AICTE, New Delhi  
P.O. BOLLIKUNTA, WARANGAL- 506 005 (Telangana State)



EMPLOYER FEEDBACK 2020-21



**Principal**  
Vaagdevi Institute of Pharmaceutical Sciences  
Bollikunta, Warangal, Telangana 506 005



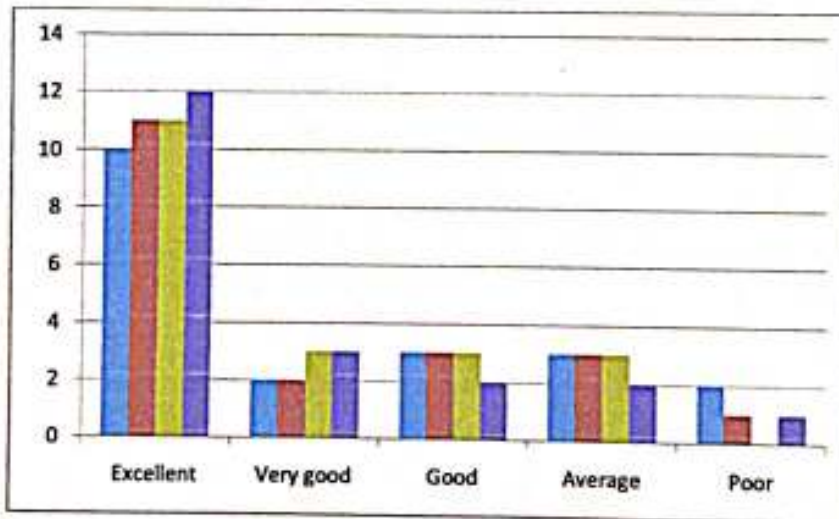
# VAAGDEVI INSTITUTE OF PHARMACEUTICAL SCIENCES

Affiliated to Kakatiya University, Approved by PCI-New Delhi, AICTE, New Delhi  
P.O. BOLLIKUNTA, WARANGAL- 506 005 (Telangana State)

## ALUMNI FEEDBACK

A four point scale feedback from alumni on the curriculum is collected. We have received total 20 alumni's feedback

S.No	Parameters	Evaluation Scale				
		Excellent	Very good	Good	Average	Poor
1	Institute organizes various kinds of activities for overall development of students	10	2	3	3	2
2	Institute handles student's grievances properly	11	2	3	3	1
3	The course /syllabus has good balance between theory and practical	11	3	3	3	0
4	The coverage of curriculum is catering the professional needs.	12	3	2	2	1



  
**Principal**  
Vaagdevi Institute of Pharmaceutical Sciences  
Bollikunta, Warangal, Telangana 506 005



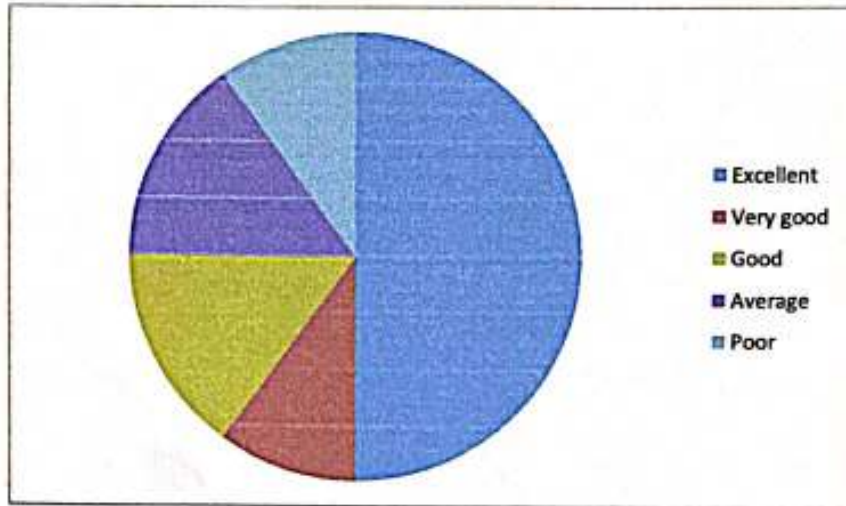


Phone: 0870-2665183, 2665146  
Fax: 0870-2665185

Viswambhara Educational Society

# VAAGDEVI INSTITUTE OF PHARMACEUTICAL SCIENCES

Affiliated to Kakatiya University, Approved by PCI-New Delhi, AICTE, New Delhi  
P.O. BOLLIKUNTA, WARANGAL- 506 005 (Telangana State)



ALUMNI FEEDBACK 2020-21



*[Handwritten Signature]*

**Principal**  
Vaagdevi Institute of Pharmaceutical Sciences  
Bollikunta, Warangal, Telangana 506 005



Viswambhara Educational Society

## VAAGDEVI INSTITUTE OF PHARMACEUTICAL SCIENCES

Affiliated to Kakatiya University, Approved by PCI-New Delhi, AICTE, New Delhi  
P.O. BOLLIKUNTA, WARANGAL - 506 005 (Telangana State)

### FEEDBACK ANALYSIS FOR THE ACADEMIC YEAR 2019-20

S.No.	COURSES OFFERED	NUMBER OF FEEDBACK COLLECTED
1	B.PHARMACY	193
2	PHARM D	108
3	M.PHARMACY (PHARMACEUTICS)	10
4	M.PHARMACY (PHARMACOLOGY)	10
5	M.PHARMACY (PHARMACEUTICAL ANALYSIS)	11

### STUDENTS FEEDBACK ON CURRICULUM

S. No	Parameters	Evaluation Scale				
		Excellent	Very good	Good	Average	Poor
1	The relevance of curriculum in carrier orientation	316	10	6	0	0
2	Prescribed books and online educational resources availability in the library	315	12	5	0	0
3	Value added courses offered in the curriculum	310	10	12	0	0
4	Teaching and mentoring process of the college	308	12	12	0	0
5	Modern teaching aids, power point presentations, e-content etc. usage by the teachers	313	13	6	0	0
6	assessment and evaluation process	309	15	8	0	0
7	Efforts taken by the college to improve the quality of teaching and learning process	308	17	7	0	0
8	Design of curriculum to enhance student's employability	309	18	5	0	0

**Principal**  
Vaagdevi Institute of Pharmaceutical Sciences  
Bollikunta, Warangal, Telangana 506 005

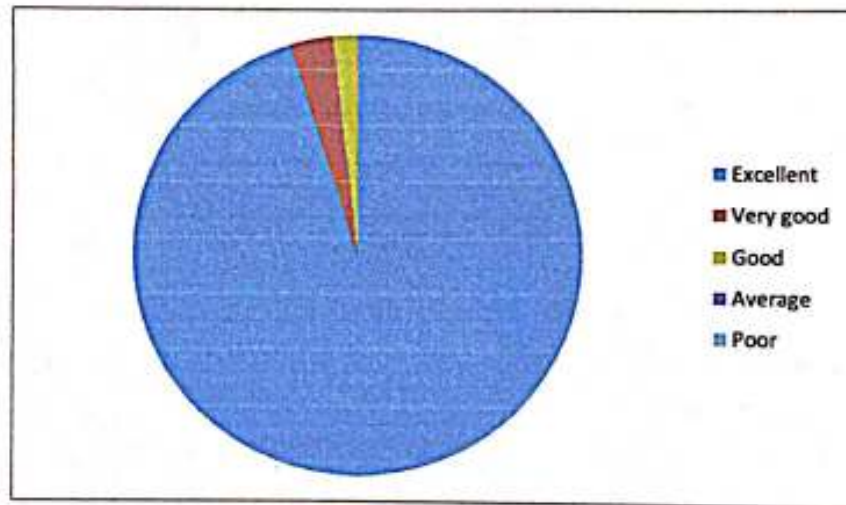
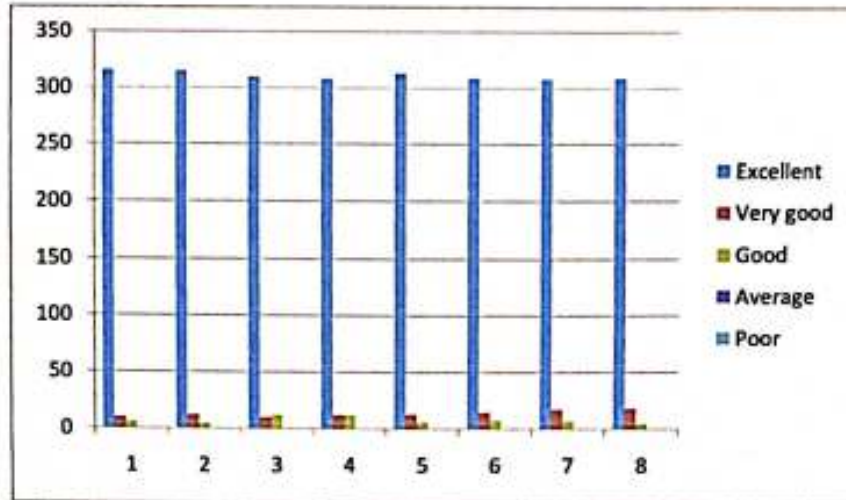




Viswambhara Educational Society

# VAAGDEVI INSTITUTE OF PHARMACEUTICAL SCIENCES

Affiliated to Kakatiya University, Approved by PCI-New Delhi, AICTE, New Delhi  
P.O. BOLLIKUNTA, WARANGAL- 506 005 (Telangana State)



## STUDENT FEEDBACK ANALYSIS 2019-20



*M. Neelam*

Principal  
Vaagdevi Institute of Pharmaceutical Sciences  
Bollikunta, Warangal, Telangana 506005

**VAAGDEVI INSTITUTE OF PHARMACEUTICAL SCIENCES**

Affiliated to Kakatiya University, Approved by PCI-New Delhi, AICTE, New Delhi

P.O. BOLLIKUNTA, WARANGAL- 506 005 (Telangana State)

**TEACHERS FEEDBACK**

A ten point scale feedback from 45 faculty members were collected

S. No	Parameters	Evaluation Scale				
		Excellent	Very good	Good	Average	Poor
1	The contents of curriculum are as per the need of students and industry requirements.	41	3	1	0	0
2	The timely coverage of syllabus is possible in the mentioned number of hours	41	2	2	0	0
3	The units/Sections in the syllabus are properly sequenced	40	1	2	1	1
4	The curriculum provides opportunity for conduct research and project related activities	42	2	1	0	0
5	The subject/syllabus is interesting for the students	43	1	1	0	0
6	Does the syllabus cover modern and advanced topics	41	1	2	0	1
7	The learning objectives are clear and appropriate to the curriculum	43	1	1	0	0
8	The course /syllabus has good balance between theory and practical	43	1	1	0	0
9	The syllabus designed in a way to improve employment / entrepreneurship	41	2	1	0	1
10	The books prescribed/reference materials are relevant, updated and appropriate	44	1	0	0	0



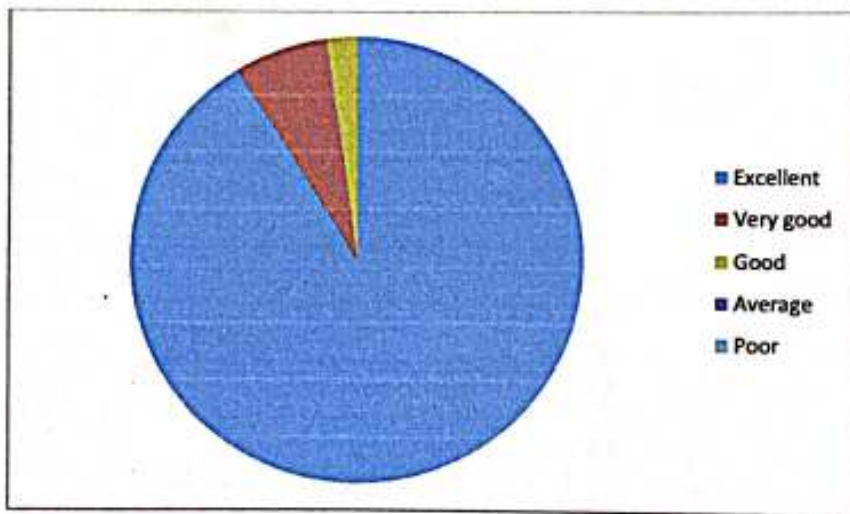
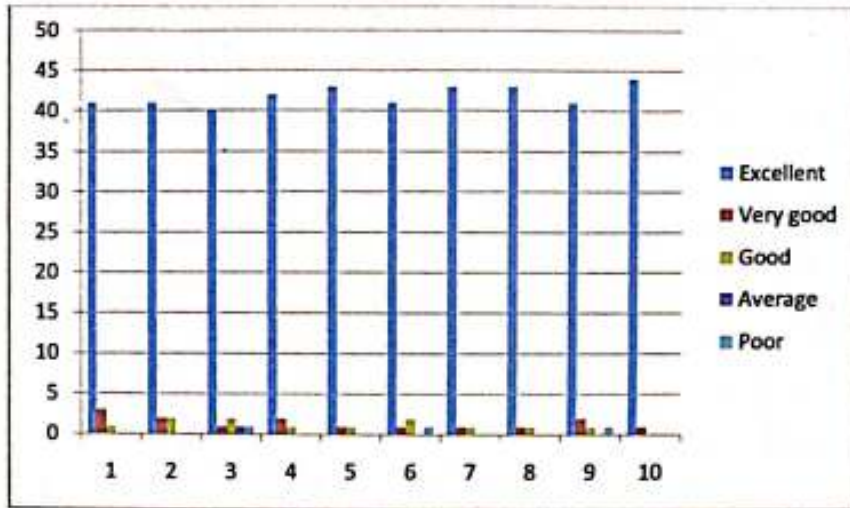
  
Principal  
Vaagdevi Institute of Pharmaceutical Sciences  
Bollikunta, Warangal, Telangana 506 005



Viswambhara Educational Society

# VAAGDEVI INSTITUTE OF PHARMACEUTICAL SCIENCES

Affiliated to Kakatiya University, Approved by PCI-New Delhi, AICTE, New Delhi  
P.O. BOLLIKUNTA, WARANGAL- 506 005 (Telangana State)



## TEACHER FEEDBACK ANALYSIS 2019-20



**Principal**  
Vaagdevi Institute of Pharmaceutical Sciences  
Bollikunta, Warangal, Telangana 506 005



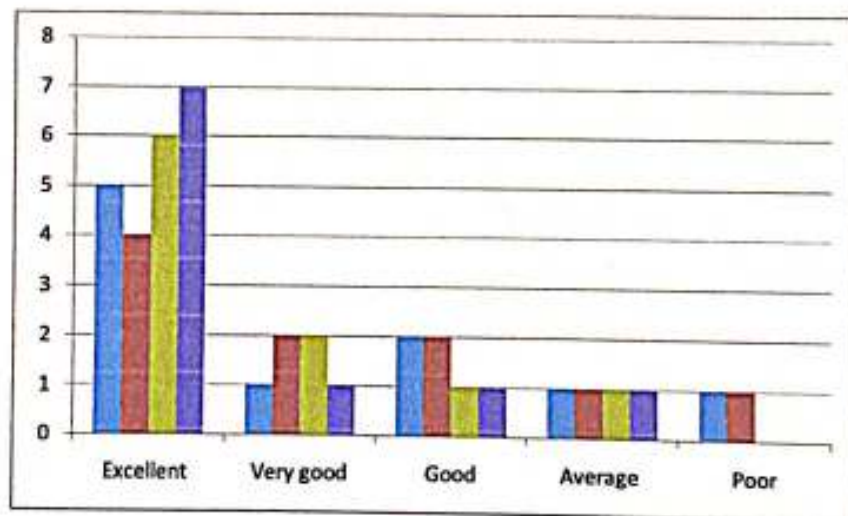
# VAAGDEVI INSTITUTE OF PHARMACEUTICAL SCIENCES

Affiliated to Kakatiya University, Approved by PCI-New Delhi, AICTE, New Delhi  
P.O. BOLLIKUNTA, WARANGAL- 506 005 (Telangana State)

## EMPLOYER FEEDBACK

A four point scale feedback from employer on the curriculum is collected. We have received total ten employer's feedback

S.No.	Parameters	Evaluation Scale				
		Excellent	Very good	Good	Average	Poor
1	curriculum relevance in developing the expecting outcomes from the candidate	5	1	2	1	1
2	curriculum relevance in developing a protective attitude in the candidate	4	2	2	1	1
3	curriculum relevance in addressing the needs/problems of the client groups	6	2	1	1	0
4	Skill sets	7	1	1	1	0



*M. N. S.*  
Principal  
Vaagdevi Institute of Pharmaceutical Sciences  
Bollikunta, Warangal, Telangana 506005



Phone: 0870-2865183, 2865146

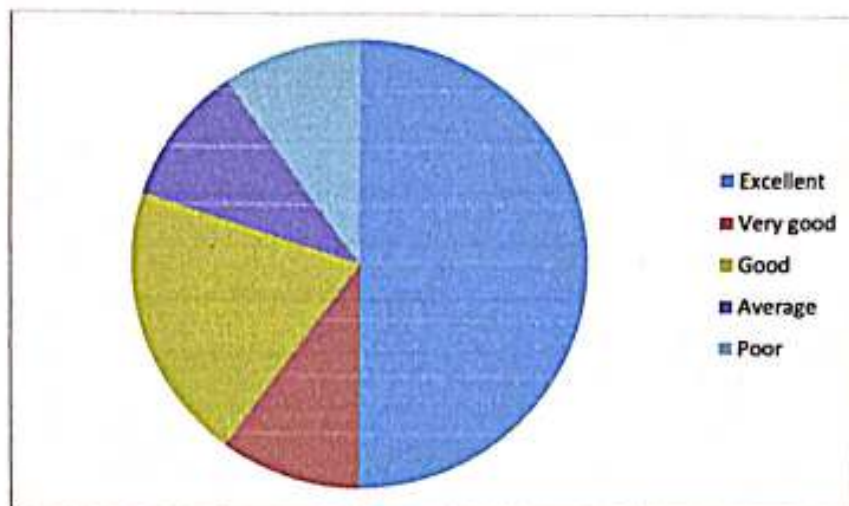
Fax: 0870-2865185

Viswambhara Educational Society

## VAAGDEVI INSTITUTE OF PHARMACEUTICAL SCIENCES

Affiliated to Kakatiya University, Approved by PCI-New Delhi, AICTE, New Delhi

P.O. BOLLIKUNTA, WARANGAL- 506 005 (Telangana State)



EMPLOYER FEEDBACK 2019-20



Principal

Vaagdevi Institute of Pharmaceutical Sciences  
Bollikunta, Warangal, Telangana 506 005



# VAAGDEVI INSTITUTE OF PHARMACEUTICAL SCIENCES

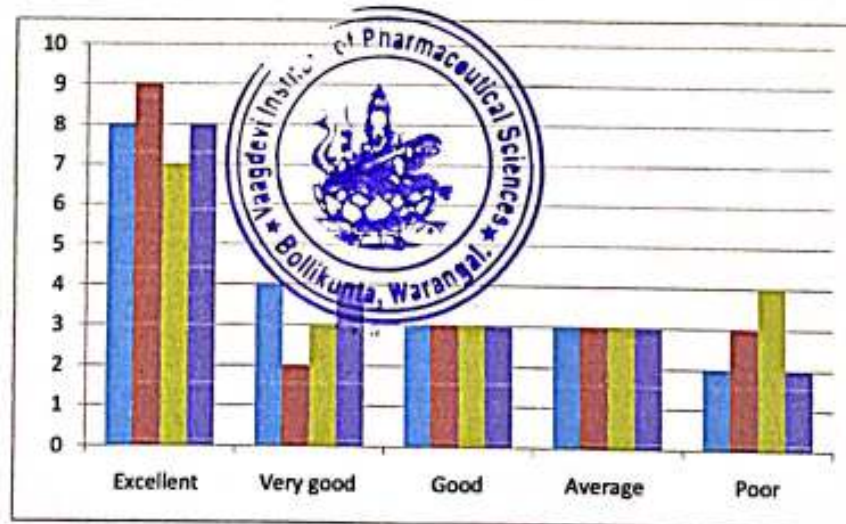
Affiliated to Kakaniya University, Approved by PCI-New Delhi, AICTE, New Delhi  
P.O. BOLLIKUNTA, WARANGAL- 506 005 (Telangana State)

## ALUMNI FEEDBACK

A four point scale feedback from alumni on the curriculum is collected. We have received

S.No	Parameters	Evaluation Scale				
		Excellent	Very good	Good	Average	Poor
1	Institute organizes various kinds of activities for overall development of students	8	4	3	3	2
2	Institute handles student's grievances properly	9	2	3	3	3
3	The course /syllabus has good balance between theory and practical	7	3	3	3	4
4	The coverage of curriculum is catering the professional needs.	8	4	3	3	2

total 20 alumni's feedback



  
**Principal**  
Vaagdevi Institute of Pharmaceutical Sciences  
Bollikunta, Warangal, Telangana 506 005



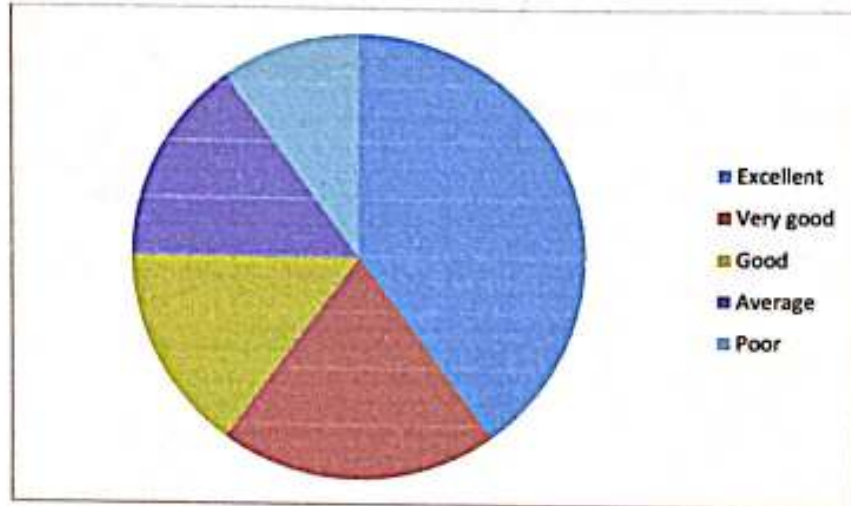


Phone: 0870-2665183, 2665146  
Fax: 0870-2665185

*Viswambhara Educational Society*

# VAAGDEVI INSTITUTE OF PHARMACEUTICAL SCIENCES

*Affiliated to Kakatiya University, Approved by PCI-New Delhi, AICTE, New Delhi*  
P.O. BOLLIKUNTA, WARANGAL- 506 005 (Telangana State)



**ALUMNI FEEDBACK 2019-20**



  
**Principal**  
Vaagdevi Institute of Pharmaceutical Science.  
Bollikunta, Warangal, Telangana 506 005



Viswambhara Educational Society

**VAAGDEVI INSTITUTE OF PHARMACEUTICAL SCIENCES**

Affiliated to Kakatiya University, Approved by PCI-New Delhi, AICTE, New Delhi

P.O. BOLLIKUNTA, WARANGAL- 506 005 (Telangana State)

**FEEDBACK ANALYSIS FOR THE ACADEMIC YEAR 2018-2019**

S.No.	COURSES OFFERED	NUMBER OF FEEDBACK COLLECTED
1	B.PHARMACY	170
2	PHARM D	119
3	M.PHARMACY (PHARMACEUTICS)	13
4	M.PHARMACY (PHARMACOLOGY)	15

**STUDENTS FEEDBACK ON CURRICULUM**

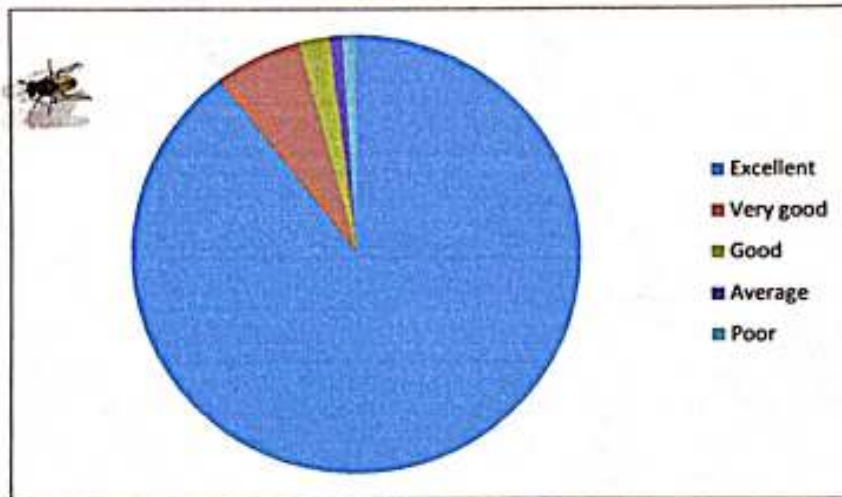
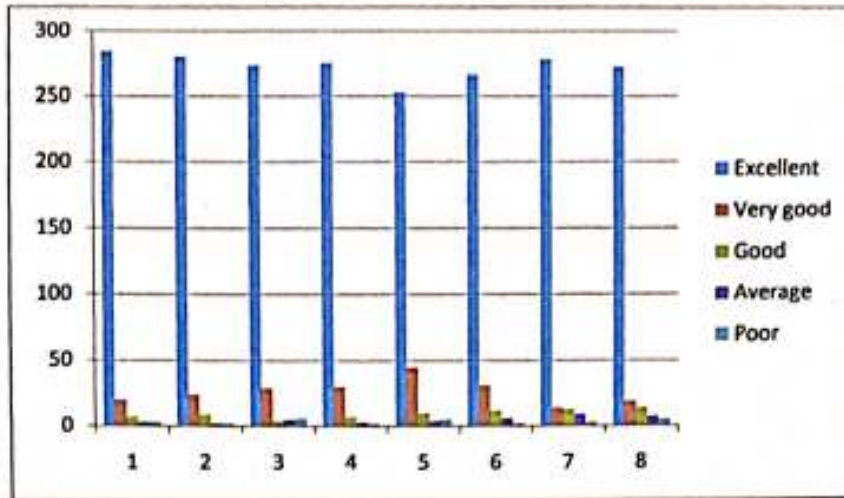
S.No	Parameters	Evaluation Scale				
		Excellent	Very good	Good	Average	Poor
1	The relevance of curriculum in carrier orientation	284	20	7	3	3
2	Prescribed books and online educational resources availability in the library	280	24	9	2	2
3	Value added courses offered in the curriculum	273	29	4	5	6
4	Teaching and mentoring process of the college	275	30	7	3	2
5	Modern teaching aids, power point presentations, e-content etc. usage by the teachers	253	45	10	4	5
6	assessment and evaluation process	266	31	12	6	2
7	Efforts taken by the college to improve the quality of teaching and learning process	278	14	13	9	3
8	Design of curriculum to enhance student's employability	272	19	14	7	5

**Principal**
 Vaagdevi Institute of Pharmaceutical Science  
 Bollikunta, Warangal, Telangana 506 005




Viswambhara Educational Society  
**VAAGDEVI INSTITUTE OF PHARMACEUTICAL SCIENCES**

Affiliated to Kakatiya University, Approved by PCI-New Delhi, AICTE, New Delhi  
P.O. BOLLIKUNTA, WARANGAL- 506 005 (Telangana State)



**STUDENT FEEDBACK ANALYSIS 2018-19**



*M. A. ...*  
**Principal**  
Vaagdevi Institute of Pharmaceutical Sciences  
Bollikunta, Warangal, Telangana 506 005



Viswambhara Educational Society

**VAAGDEVI INSTITUTE OF PHARMACEUTICAL SCIENCES**

Affiliated to Kakatiya University, Approved by PCI-New Delhi, AICTE, New Delhi

P.O. BOLLIKUNTA, WARANGAL- 506 005 (Telangana State)

**TEACHERS FEEDBACK**

A ten point scale feedback from 43 faculty members were collected

S.No	Parameters	Evaluation Scale				
		Excellent	Very good	Good	Average	Poor
1	The contents of curriculum are as per the need of students and industry requirements.	39	1	1	1	1
2	The timely coverage of syllabus is possible in the mentioned number of hours	38	2	2	1	0
3	The units/Sections in the syllabus are properly sequenced	39	2	1	1	0
4	The curriculum provides opportunity for conduct research and project related activities	40	1	1	1	0
5	The subject/syllabus is interesting for the students	41	1	0	1	0
6	Does the syllabus cover modern and advanced topics	39	1	1	0	2
7	The learning objectives are clear and appropriate to the curriculum	39	0	1	2	1
8	The course /syllabus has good balance between theory and practical	39	1	1	1	1
9	The syllabus designed in a way to improve employment / entrepreneurship	38	1	1	1	2
10	The books prescribed/reference materials are relevant, updated and appropriate	40	0	0	1	2



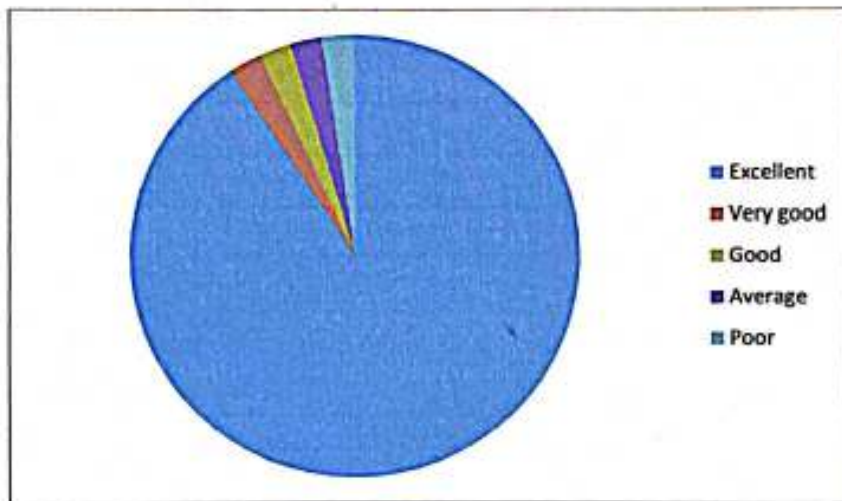
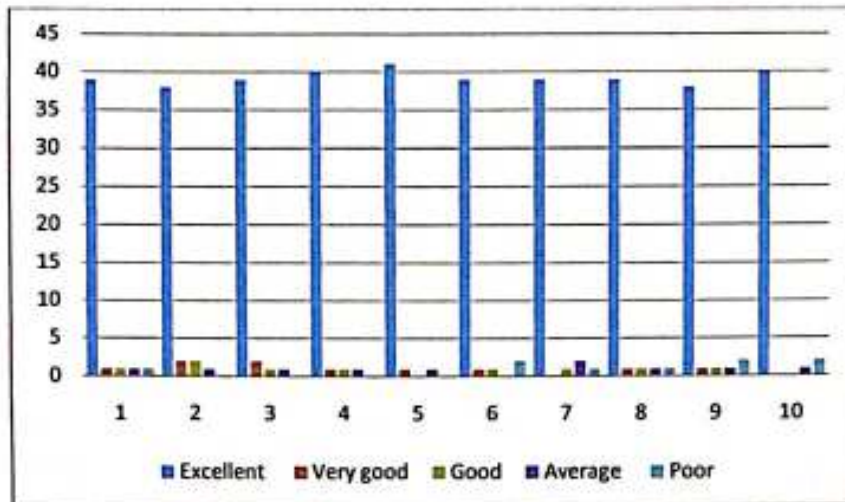
Principal

Vaagdevi Institute of Pharmaceutical Sciences  
Bollikunta, Warangal, Telangana 506 005



Viswambhara Educational Society  
**VAAGDEVI INSTITUTE OF PHARMACEUTICAL SCIENCES**

Affiliated to Kakatiya University, Approved by PCI-New Delhi, AICTE, New Delhi  
P.O. BOLLIKUNTA, WARANGAL- 506 005 (Telangana State)



**TEACHER FEEDBACK 2018-19**



**Principal**  
Vaagdevi Institute of Pharmaceutical Sciences  
Bollikunta, Warangal, Telangana 506 005



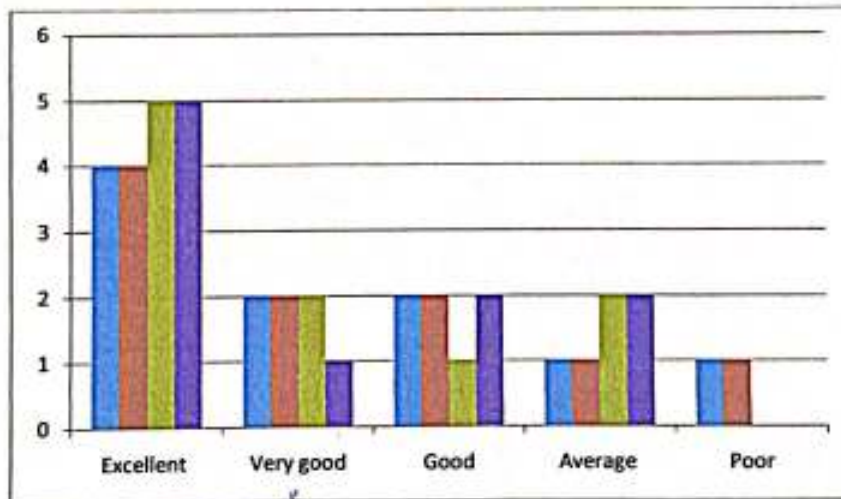
Viswambhara Educational Society  
**VAAGDEVI INSTITUTE OF PHARMACEUTICAL SCIENCES**

Affiliated to Kakatiya University, Approved by PCI-New Delhi, AICTE, New Delhi  
P.O. BOLLIKUNTA, WARANGAL- 506 005 (Telangana State)

**EMPLOYER FEEDBACK**

A four point scale feedback from employer on the curriculum is collected. We have received total ten employer's feedback

S.No	Parameters	Evaluation Scale				
		Excellent	Very good	Good	Average	Poor
1	curriculum relevance in developing the expecting outcomes from the candidate	4	2	2	1	1
2	curriculum relevance in developing a protective attitude in the candidate	4	2	2	1	1
3	curriculum relevance in addressing the needs/problems of the client groups	5	2	1	2	0
4	Skill sets	5	1	2	2	0



*(Handwritten Signature)*

**Principal**  
Vaagdevi Institute of Pharmaceutical Science,  
Bollikunta, Warangal, Telangana 506 005

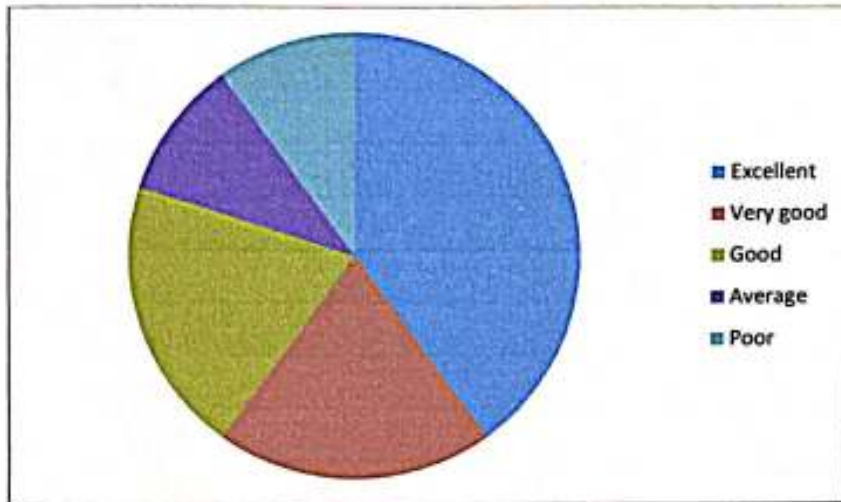


Viswambhara Educational Society

# VAAGDEVI INSTITUTE OF PHARMACEUTICAL SCIENCES

Affiliated to Kakatiya University, Approved by PCI-New Delhi, AICTE, New Delhi

P.O. BOLLIKUNTA, WARANGAL- 506 005 (Telangana State)



**EMPLOYER FEEDBACK 2018-19**



**Principal**  
Vaagdevi Institute of Pharmaceutical Sciences  
Bollikunta, Warangal, Telangana 506 005



Viswambhara Educational Society  
**VAAGDEVI INSTITUTE OF PHARMACEUTICAL SCIENCES**

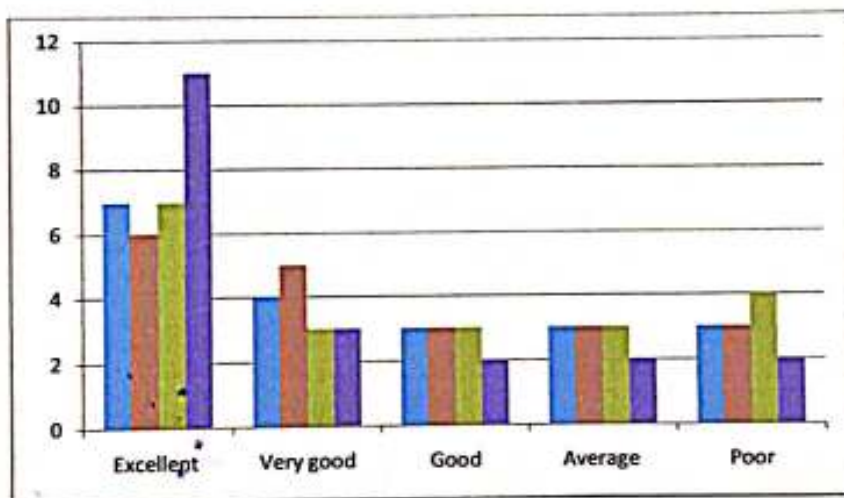
Affiliated to Kakatiya University, Approved by PCI-New Delhi, AICTE, New Delhi  
P.O. BOLLIKUNTA, WARANGAL- 506 005 (Telangana State)

**ALUMNI FEEDBACK**

A four point scale feedback from alumni on the curriculum is collected. We have received

S.No	Parameters	Evaluation Scale				
		Excellent	Very good	Good	Average	Poor
1	Institute organizes various kinds of activities for overall development of students	7	4	3	3	3
2	Institute handles student's grievances properly	6	5	3	3	3
3	The course /syllabus has good balance between theory and practical	7	3	3	3	4
4	The coverage of curriculum is catering the professional needs.	11	3	2	2	2

total 20 alumni's feedback



*(Handwritten Signature)*

**Principal**  
Vaagdevi Institute of Pharmaceutical Science:  
Bollikunta, Warangal, Telangana 506 005

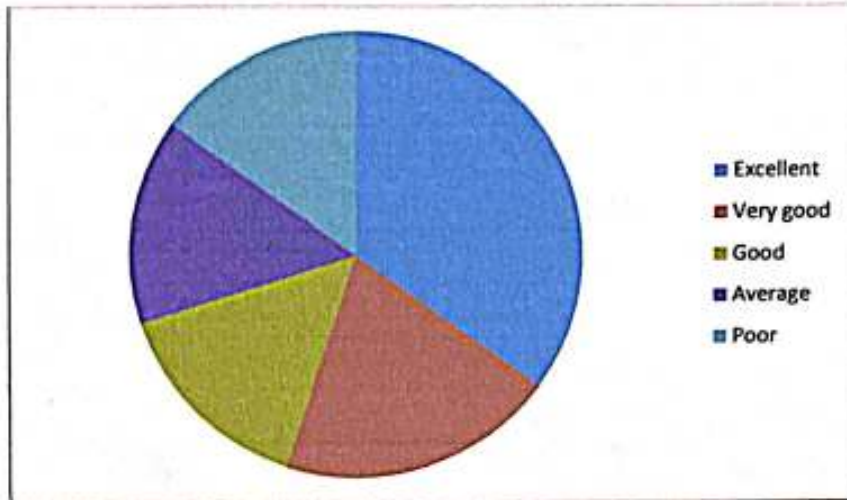




Viswambhara Educational Society

# VAAGDEVI INSTITUTE OF PHARMACEUTICAL SCIENCES

Affiliated to Kakatiya University, Approved by PCI-New Delhi, AICTE, New Delhi  
P.O. BOLLIKUNTA, WARANGAL- 506 005 (Telangana State)



ALUMNI FEEDBACK 2018-19



**Principal**

**Vaagdevi Institute of Pharmaceutical Sciences  
Bollikunta, Warangal, Telangana 506005**